

# Healthix Flags API *Specification*

**Version 1**



Healthix, Inc.  
40 Worth St., 5<sup>th</sup> Floor  
New York, NY 10013  
1-877-695-4749 Ext. 1  
[healthix.org](http://healthix.org)

**Table of Contents**

- 1. Portal API Introduction..... 4
- 2. Registration & Authentication ..... 4
- 3. Flags API ..... 5
- 4. Steps for Flags API..... 6

| Version | Date          | Author       | Comments                 |
|---------|---------------|--------------|--------------------------|
| 1.0     | July 14, 2016 | Naitik Patel | Create initial document. |

## **1. Portal API Introduction**

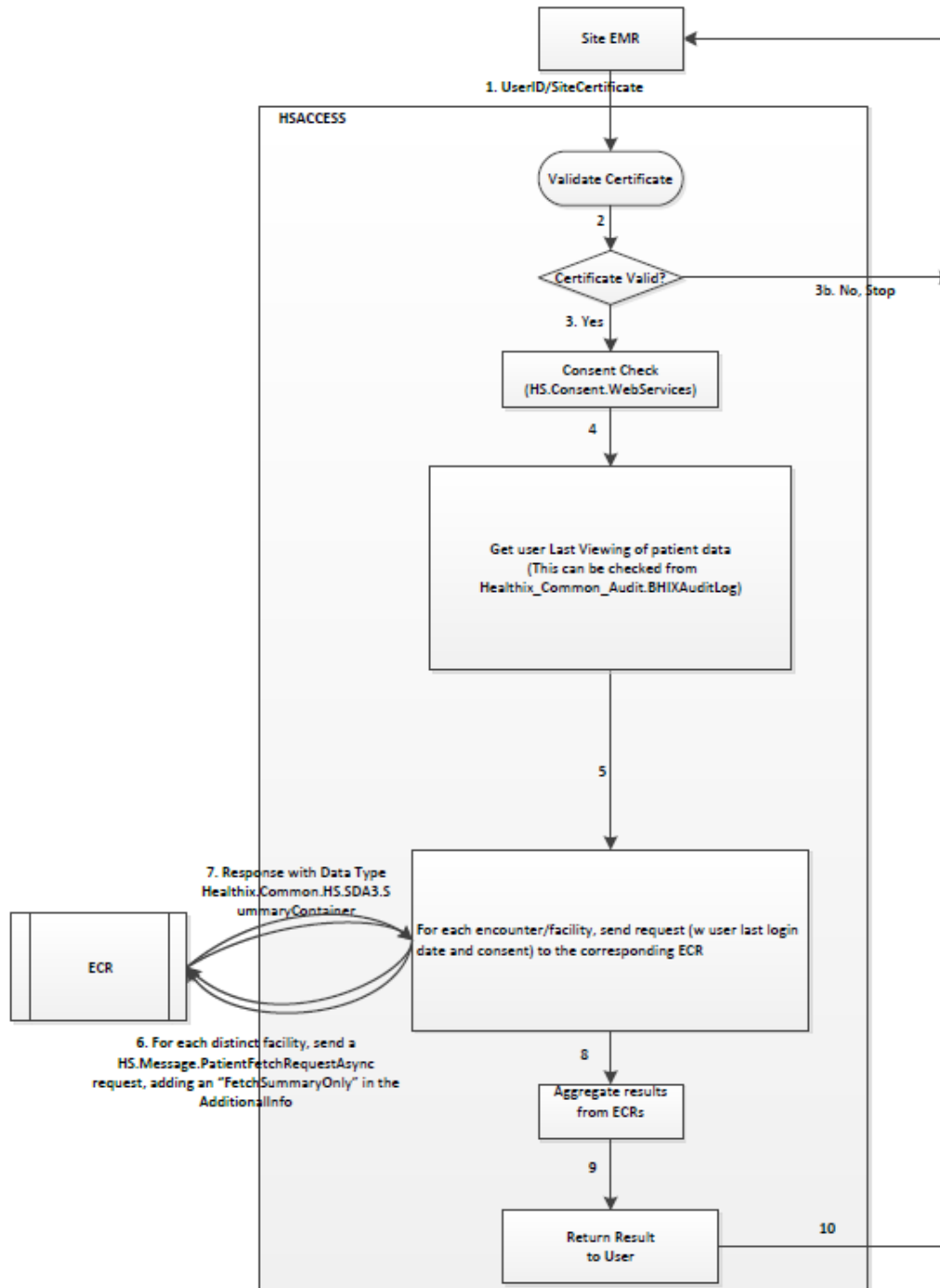
A Flags API solution allows Healthix participant's users to get Healthix consent, data elsewhere and new data information from Healthix on patient search in their EHR. When clinician searches for a patient in their EMR, an automated web-service request will trigger to Healthix with Facility ID and patient MRN. Healthix will use Facility ID and patient MRN to search for patient consent, data elsewhere and new data in Healthix.

## **2. Registration & Authentication**

Healthix uses SAML authentication to authorize users/facility requesting access to Healthix Flags via API service. SAML authentication for Flags API enables users to access information in Healthix network without using Healthix's User registration. In SAML authentication, Participant sends information required by Healthix via SOAP call. Once Healthix gets the user information from request API, Healthix creates user profile in its HealthShare user directory. For subsequent user access, Healthix uses the user profile created during the initial access to authenticate and authorize user.

### 3. Flags API

Flags API uses SAML authentication to allow participants to authenticate users for the Healthix Flags access. The following diagram shows the workflow for Flags API from participant to Healthix.



#### 4. Steps for Flags API

1. Clinician/User searches for Patient in their EHR.
2. EHR generates the request to Healthix with the following attributes and sends in the SAML portion of the HTML through http post

| Item                       | Required |
|----------------------------|----------|
| Patient's MRN              | Required |
| Facility ID                | Required |
| Clinician's User ID        | Required |
| Clinician's User Role      | Required |
| Clinician's User Specialty | Required |
| Clinician's Email          | Required |

- a. For Inpatient Facilities (Facility ID with value such as C,F,G,J,M,S), MRN can be retrieved from the SAML attribute "MRN{FacilityID}", where {FacilityID} is the value of the Facility ID
- b. For other facilities, MRN will be retrieved from the SAML attribute "MRNE", which is the EID from EPIC

```
<soapenv:Envelope xmlns:soapenv="http://schemas.xmlsoap.org/soap/envelope/"
xmlns:ws="http://www.healthix.org/Healthix/ws" xmlns:wsa="http://www.w3.org/2005/08/addressing"
xmlns:wss="http://docs.oasis-open.org/wss/oasis-wss-wssecurity-secext-1.1.xsd" xmlns:wsu="http://docs.oasis-
open.org/wss/2004/01/oasis-200401-wss-wssecurity-utility-1.0.xsd" xmlns:xs="XMLSchema-instance"
xmlns:saml="urn:oasis:names:tc:SAML:2.0:assertion" xmlns:wss11="http://docs.oasis-open.org/wss/oasis-wss-
wssecurity-secext-1.1.xsd" xmlns:xsi="http://www.w3.org/2001/XMLSchema-instance">
  <soapenv:Body>
    <ws:Query>
      <!--Optional:-->
      <ws:pRequest>
        <!--Optional:-->
        <ws:MRN>1417030</ws:MRN>
        <!--Optional:-->
        <ws:AssigningAuthority>IFH</ws:AssigningAuthority>
        <ws:UserName>880567</ws:UserName>
        <!--Optional:-->
        <ws:UserDomain>IFH</ws:UserDomain>
        <ws:SiteSecurityCertificate>ZLo+ERe/YOJY28KV7g4fBEI5pRXFYiF+kPNubQm8jI2BN38NNI4rmUkIK/cv
yEGD</ws:SiteSecurityCertificate>
      </ws:pRequest>
    </ws:Query>
  </soapenv:Body>
</soapenv:Envelope>
```

3. EHR sends generated request to Healthix.
4. Healthix process the SAML http header request received from participant.
5. For new users, Healthix create the user in Healthix.
6. Once authenticated and authorized, Healthix queries HealthShare for Patient Information and checks patient's consent.
7. Healthix checks for following flags:

- a. Consent? – Patient’s consent preference for Facility: Y or N
  - b. Elsewhere? – Is there data for this patient from any facilities other than requesting : Y or N
  - c. New? - Is there any new data in Healthix since the last time this user queried: Y or N
8. Healthix generates response to the EHR’s request.

```
<SOAP-ENV:Envelope xmlns:SOAP-ENV="http://schemas.xmlsoap.org/soap/envelope/"
xmlns:xsi="http://www.w3.org/2001/XMLSchema-instance" xmlns:s="http://www.w3.org/2001/XMLSchema">
  <SOAP-ENV:Body>
    <PatientSummaryResponse>
      <SAMLData></SAMLData>
      <HasConsent>true</HasConsent>
      <DataElseWhere>true</DataElseWhere>
      <DataSinceLastQuery>>false</DataSinceLastQuery>
    </PatientSummaryResponse>
  </SOAP-ENV:Body>
</SOAP-ENV:Envelope>
```